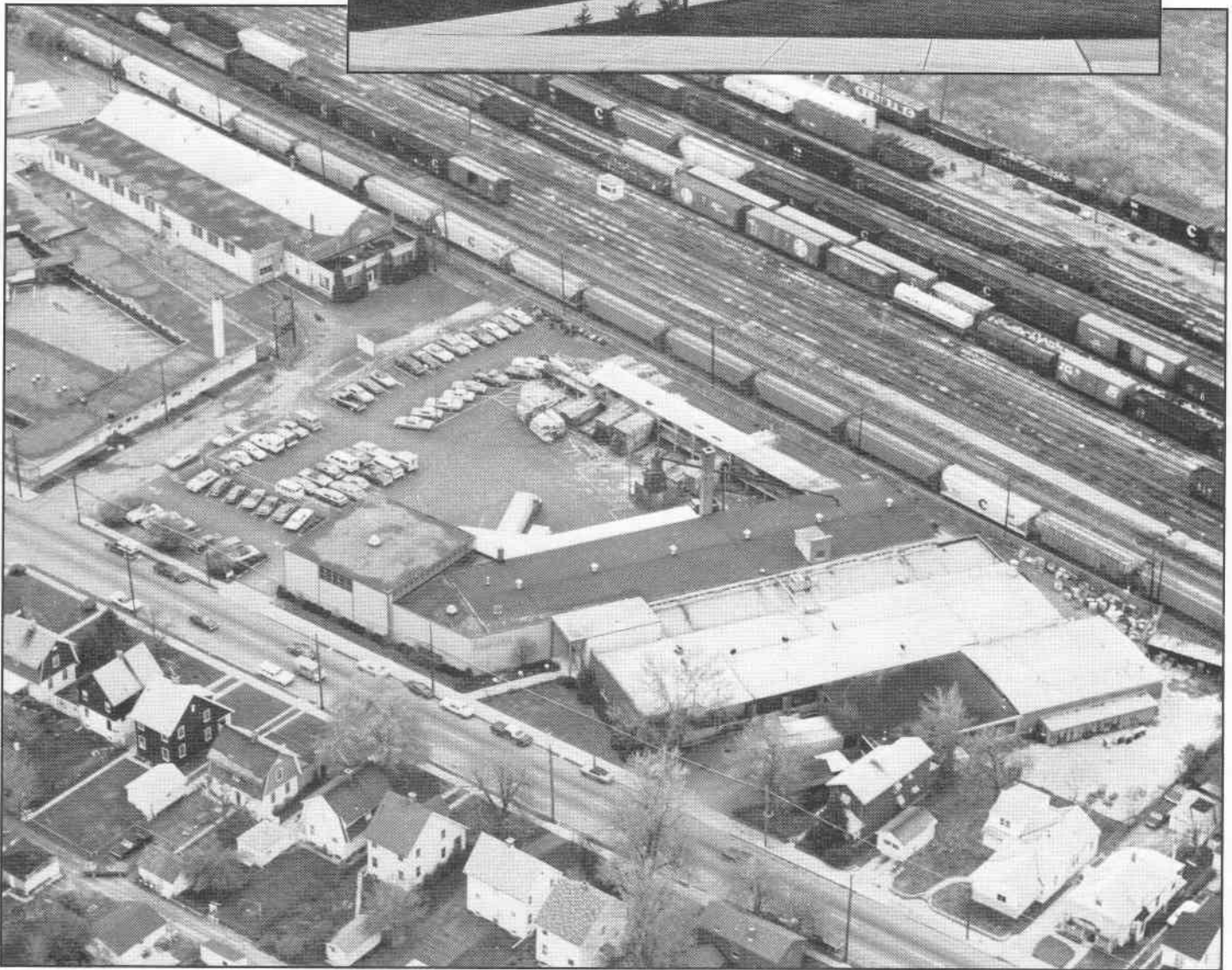
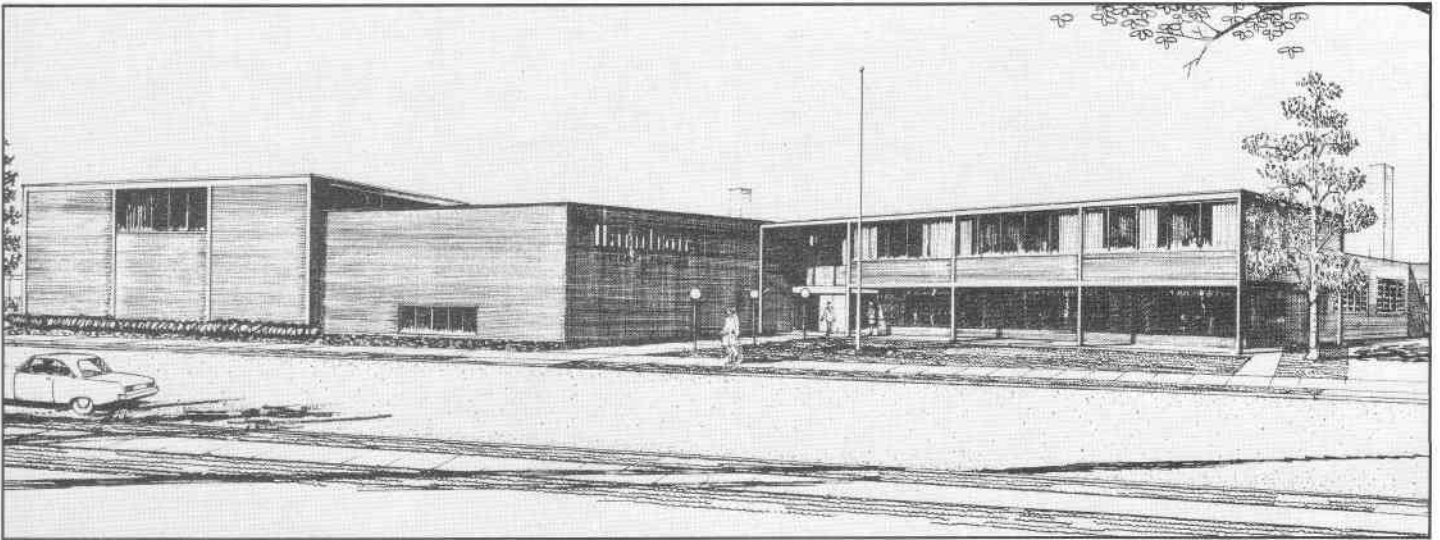


By 1960 the North Dock/Warehouse was added, the lumber dock expanded, and a garage built for the company truck. Notice the South Dock area. By this time Hamilton Caster had acquired the land at the lower left, but had not yet graded and paved it for parking. Trucks delivering steel backed in between the two buildings and the bars were unloaded by hand through basement windows into the Truck Department.

# FACILITIES



In 1978 Plant 2 (acquired in 1975 but still minus the loading dock) was being used as a warehouse. The truck building had been extensively remodeled in 1966 with the addition of a 60' x 60' crane bay, a new modern facade, and a larger covered dock. The parking lot was also paved in 1966 for the first time. Phase II of the project provided additional office space by connecting the Truck and Caster buildings, and adding a new front lobby (see inset) with conference room above.



The third phase of this architectural concept was fully modified to provide increased office space, needed by the time construction began in 1979.

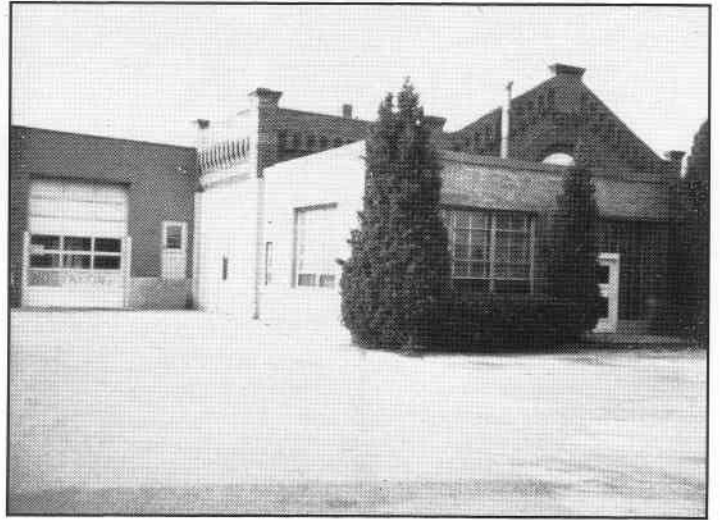


Our most recent aerial photo includes all current changes except the 1985 warehouse addition.

# FACILITIES



In 1978 we moved our machine shop to Plant 2.



Later, in 1979, the front office was temporarily housed in the Plant II office facility while the new office was under construction.



Demolition of the "old" office began in the summer of 1979.



Our most recent construction project was the high-bay caster warehouse added in 1985.

## THE EARLY YEARS



"Team Picture Day" 1920 style. These photos give a view of how we manufactured Casters in the early years. Machines were powered by the overhead line shafts which turned the belts. Most casters in that era were shipped in wooden barrels.



# THE EARLY YEARS

These letters illustrate Hamilton's early marketing efforts. The top letter (1920 vintage) features Hamilton's "Run-Rite" Caster (Hamilton's first big product success) and the Dixie Highway facility.



**HAMILTON**  
CASTER & MFG. CO.  
HAMILTON, OHIO

AND THEN --  
THEY CHANGED TO "HAMILTONS" ---

Two years ago, the General Manager of a big factory in central Ohio called in an Industrial Engineer.

"Our production costs are too high and our production is too low," he told him. "What's the answer?" For weeks the Engineer checked up on every step of the production process. Then he made his report.

"It's taking you too long to move materials," he told them. Your trucks move too slowly. There are too many breakdowns - too many traffic tie-ups. For one thing, you need casters that are better adapted to your particular trucks."

Then they ordered their first "Hamiltons".

And today their output is much larger - their costs much lower. "Hamilton" Casters have proved to the satisfaction of many of the biggest industrial concerns in the country - such firms as Ford, Westinghouse, Packard, Fisher Body, etc. - that they are the fastest, safest, strongest, most efficient casters made.

We believe a trial of a set of "Hamiltons" will prove this to you. We believe it so much that we'll gladly send you a set for your use. Put them to the hardest kind of service in your plant. You will be amazed how they stand up under punishment that would send any other kind of casters to the junk heap.

A strong statement, you say? You be the judge. Just check and mail the enclosed card. NOW!

Yours very truly,  
THE HAMILTON CASTER & MFG. CO.

President



## The Hamilton Caster & Mfg. Co.

OPERATING ZERING M'FG CO.

FACTORY AND WAREHOUSE  
TRUCKS AND TRAILERS IN  
WOOD AND STEEL



INDUSTRIAL CASTERS  
SWIVEL AND RIGID  
SINGLE AND DOUBLE WHEEL

HAMILTON, OHIO

November 15, 1930

Gentlemen:

The inside pages of this letterhead shows in detail one of the many styles and sizes of warehouse trucks we manufacture.

Please note the rugged construction. The truck has been reinforced at every wearing point, so that maximum service will be given at all times.

The casters are of the double ball race adjustable type, roller bearing wheels so that the big loads are moved with the least possible effort.

Whenever you need warehouse or factory trucks, please give us the opportunity of figuring with you.

Yours very truly,  
THE HAMILTON CASTER & MFG. CO.

MAC:EB

PUT IT ON WHEELS AND KEEP IT MOVING

THE WORLD'S LARGEST CASTER AND TRUCK SPECIALISTS

Zering Trucks, purchased in the late 1920's, were promoted heavily in the 1930's. Eventually, the Zering name was phased out in favor of Hamilton's.